

## Milestone in the energy transition: SuedLink construction also begins in southern Lower Saxony

- **STRABAG and consortium partner Köster start construction work on power line section in Einbeck**
- **TransnetBW Managing Director Dr. Werner Götz: “SuedLink will transport electricity from the wind-rich regions in the north to the consumption centers in the south – a key contribution to the energy transition throughout Germany.”**
- **Minister President Olaf Lies: “SuedLink will make Lower Saxony an energy hub and secure a climate-friendly energy supply for the whole of Germany.”**

Einbeck. Electricity grid operator TransnetBW has officially kicked off construction of SuedLink in the districts of Hildesheim, Northeim, and Göttingen. STRABAG AG and Köster GmbH are jointly building the approximately 100-kilometer section of the power line in the SuedLink South Lower Saxony consortium (ARGE). Lower Saxony's Minister President Olaf Lies, TransnetBW Managing Director Dr. Werner Götz, and TenneT Managing Director Tim Meyerjürgens attended the ceremony and emphasized the importance of the infrastructure project for the energy transition. At the same time, SuedLink construction work is also underway in Baden-Württemberg, Bavaria, Hesse, and Schleswig-Holstein.

SuedLink is the central infrastructure project of the energy transition. The direct current underground cable will transport 4 gigawatts of wind power from northern to southern Germany – enough to supply around 10 million households with climate-friendly electricity. SuedLink is therefore of central importance for grid stability and security of supply.

At the ceremony in Einbeck, Lower Saxony's Minister President Olaf Lies said: “With today's start of construction in Einbeck, we are setting a decisive milestone for the energy transition – not only in Lower Saxony, but throughout Germany. (...) Lower Saxony is assuming responsibility as an energy hub and remains a reliable partner for a secure and sustainable energy supply.”

“In the future, SuedLink will bring electricity from the wind-rich regions in the north to the consumption centers in the south,” said TransnetBW Managing Director Dr. Werner Götz during the ceremony. “In doing so, we are making a key contribution to the energy transition throughout Germany – and at the same time demonstrating that grid expansion can be achieved in close dialogue with politics, business, and society.” (...)

Managing Director Tim Meyerjürgens came to Einbeck on behalf of project partner TenneT. “SuedLink is a joint project that thrives on the close and cooperative partnership between our two companies,” he emphasized. “Here in Lower Saxony in particular, where we are effectively passing the baton of responsibility north of Elze, close cooperation and knowledge exchange are especially important,” said Meyerjürgens.

Rudolf Sabatier, head of the STRABAG Lower Saxony/Saxony-Anhalt division, which is in charge of the project, explained on the sidelines of the event: “We are building for the energy transition in Germany. We are very pleased that our civil engineering expertise, which has grown over decades, is making a valuable contribution to the realization of this future-oriented infrastructure project. The start of construction on the route section in southern Lower Saxony is an important milestone for us. We would like to thank everyone involved for their trusting and constructive partnership,”

The planning approval decisions for the approximately 100-kilometer-long SuedLink section from Elze to Friedland were issued by the Federal Network Agency in the summer. This

means that construction work can now begin in earnest. With early approval from the Federal Network Agency, construction work in Einbeck-Salzderhelden had already begun last December. Currently, the Kleine Heldenberg is being drilled under.

Further construction work is now set to begin shortly. After the preparatory construction measures, obstacles such as roads or waterways will be crossed using horizontal drilling. As with open trench construction, empty conduits will first be installed. The cables will be pulled through at a later date. South of Einbeck, archaeological measures are also being carried out in advance of construction. These serve to uncover and secure archaeological findings and discoveries in advance of the actual construction work.

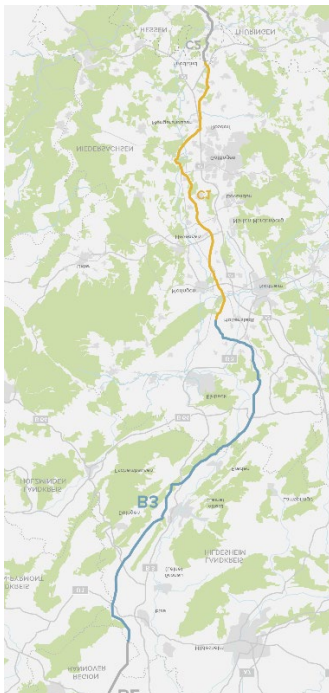
The construction measures of the ARGE SuedLink South Lower Saxony consortium will generally be carried out one after the other in the coming months, but in some cases also in parallel.

### About SuedLink

SuedLink is one of the largest infrastructure projects of the energy transition. The direct current underground cable connection will link the wind-rich regions of northern Germany with Bavaria and Baden-Württemberg. The 700-kilometer connection is being implemented by the two electricity grid operators TransnetBW and TenneT. TenneT is responsible for the northern section of the route and the converters in Schleswig-Holstein and Bavaria, while TransnetBW is responsible for the southern section of the route and the converter in Baden-Württemberg.

Further information about SuedLink at <https://suedlink.com>

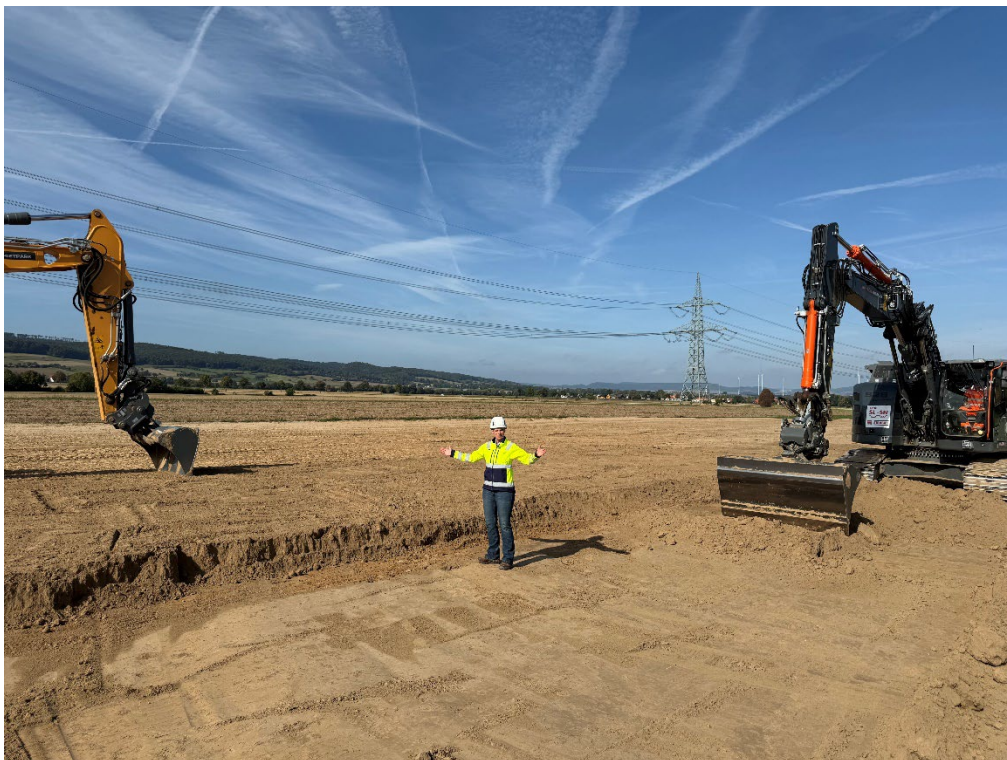
source: <https://www.transnetbw.de/de/newsroom/pressemitteilungen/suedlink-geht-auch-in-suedniedersachsen-in-den-bau>



*Bildtext: STRABAG AG and its consortium partner Köster GmbH are constructing the approximately 100-kilometre-long SuedLink section between Elze and Friedland in southern Lower Saxony. © TransnetBW*



*Delighted about the start of construction of SuedLink in Einbeck (from left): Niedersachsens Ministerpräsident Olaf Lies, TransnetBW-Geschäftsführer Dr. Werner Götz, TenneT-Geschäftsführer Tim Meyerjürgens und Einbecks Bürgermeisterin Sabine Michalek. © TransnetBW*



*Excavators deployed for the German energy transition: the SuedLink power cable route is intended to transport electricity from the wind-rich regions in northern Germany to the consumption centres in the south. © TransnetBW*